

# College comparison: summary

Choose college  
Christ Church

## Norrington Score History

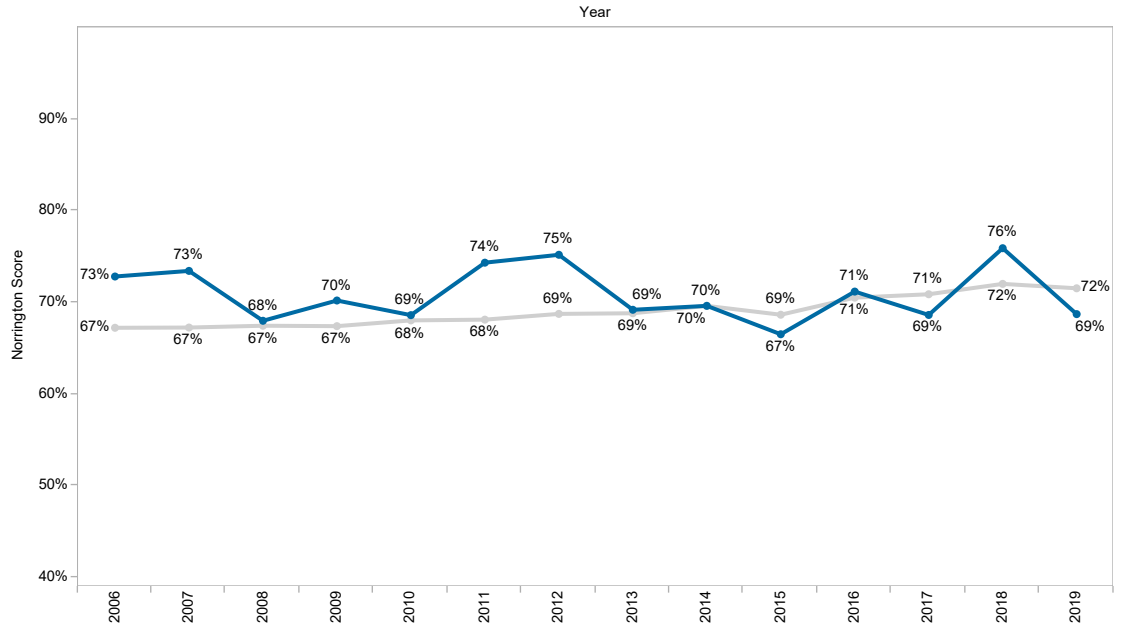
Sex  
Female

This view allows you to compare one college's Norrington score over time against the rest of the university. In this chart, "rest of the university" means all students (including PPHs) other than the selected college/PPH.

Use the filters to change the college and/or sex. More details can be found on the College Comparison detail sheet.

"Sex" refers to a dichotomous female:male variable which may differ from an individual's preferred gender

College/Rest of Uni  
■ Christ Church  
■ Rest of the University



### Details

		2006	2007	2008	2009	2010	2011	2012	2013	2014	2015	2016	2017	2018	2019
Christ Church	Norrington Score	73%	73%	68%	70%	69%	74%	75%	69%	70%	67%	71%	69%	76%	69%
	Students	53	61	50	47	65	53	50	50	54	49	59	44	49	55
Rest of the University	Norrington Score	67%	67%	67%	67%	68%	68%	69%	69%	70%	69%	71%	71%	72%	72%
	Students	1,509	1,476	1,418	1,435	1,365	1,440	1,355	1,374	1,375	1,374	1,429	1,408	1,387	1,398